



c'ışaaʔath First Nation

Community Engagement

Land use Planning on c'ışaaʔath Territory.

After a lot of work we are thrilled to be in the final stages of completing the revised c'ışaaʔath Comprehensive Community Plan (CCP). The CCP is for our community and has been guided and driven by our community. Recently, we completed the forestry and fisheries survey - the information has been analysed and will be included in the CCP. Thank you to all who participated!

At this time we are working on the land use section of the Plan. Land use planning is a critical part of the CCP. This is where we first envision and then determine land uses on our Territory. The first step is to look at the land from a high level - What areas are best for economic growth, environmental and cultural protection? Where are the forestry lands? What land should be set aside for future housing?

After these questions are answered we can zoom in for a closer look. For example after the land has been determined for future housing, let's look at what a new subdivision could look like. Where are the commercial areas - where do we want our businesses to be located? What areas are compatible for adjacent uses?

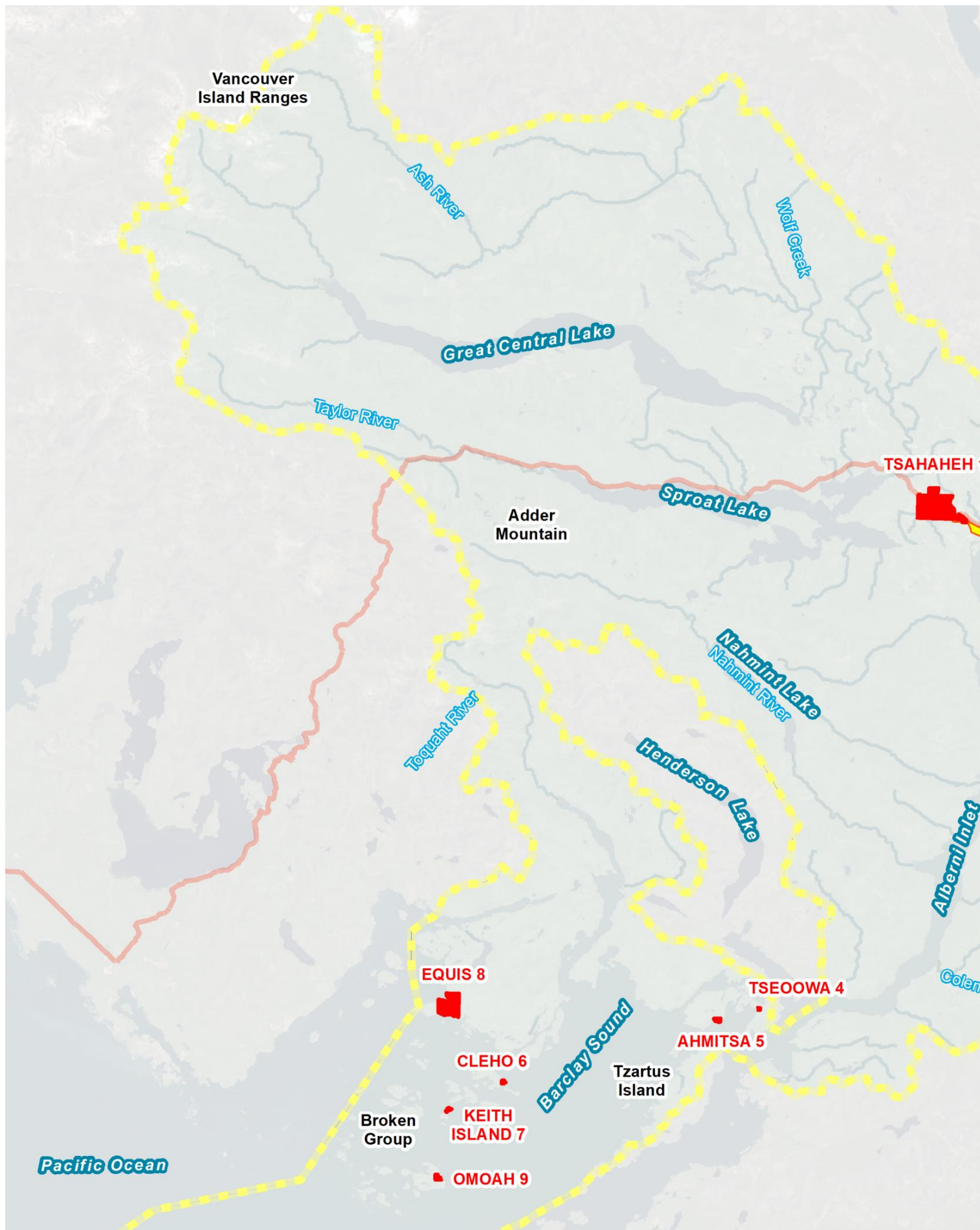
We want to hear from you! We want to understand your ideas, thoughts and feelings about our c'ışaaʔath territory. We want to hear from our Elders, our youth, our entire community!

Take a look at our Territorial map on the next page. This page is for you to draw and write your ideas about how the land is used. The back page gives instructions and example of a sample territorial land use map.

We have scheduled times for community engagement. This is your opportunity to bring your family and ideas so that they are included in the overall vision. The back page provides location, times and dates. Please come, bring your map and share your ideas!

We will be practicing Covid-19 physical distancing protocol at the community engagement.







c'ışaaʔath First Nation Territory Map

LEGEND

-  Island Highway
-  c'ışaaʔath Territory
-  c'ışaaʔath Reserves
-  c'ışaaʔath Acquired Lands

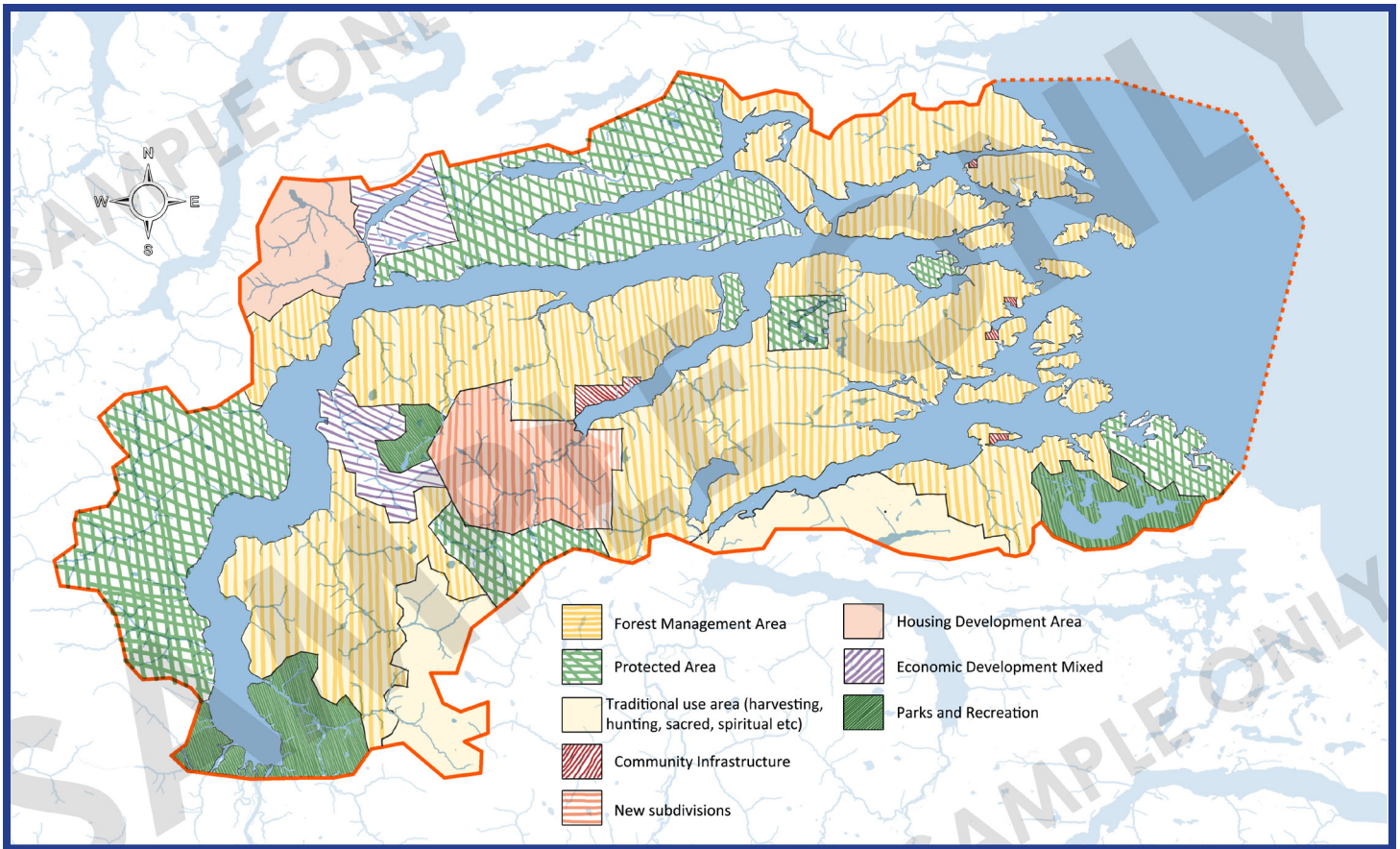
Map Notes

PLEASE NOTE

This map is provided for information sharing use only. The collection of evidence of the use and occupation of Tseshah First Nation's territory is an ongoing process. The Tseshah Nation expressly reserves the right to modify the map of its territory from time to time as more information is obtained. This map is not a legal description of any kind and is without prejudice to Tseshah Aboriginal Title and Rights.

Data Source: Tseshah First Nation, Data BC (2020)





SAMPLE TERRITORY LAND USE MAP

These colourful markings and lines represent different ways to show land use. The 8 different typologies represent individual land use typologies.

At the high level think about the larger land uses such as:

- Community Development Area
- Forest Management Area
- Traditional Use Area
- Protected Area
- Harvest Bay Area
- Housing Development Area

Also think about smaller designated areas such as:

- New Subdivisions
- Community Infrastructure (Halls/Gyms/Offices)
- Parks and Recreation
- Economic Development Commercial
- Economic Development Industrial
- Economic Development Mixed
- Cultural/Sacred/No Development/Reserved Due to Environmental
- Education, Training, or Similar Institution

Mark up the Tseshaht Territory map with your ideas!
Share your ideas with other community members!

Community Engagement

Please join us at the
Tseshaht Administration
Building

Drop in times:

Sunday, November 8th, 2020
10:00 a.m - 7:00 p.m.

Monday, November 9th, 2020
10:00 a.m. - 7:00 p.m.

Tuesday, November 10th, 2020
10:00 a.m. - 7:00 p.m.

Come and share your ideas
with your community!